

# AQUA REMOTE<sup>®</sup>

SALES BROCHURE



Real Time Water Monitoring,  
for Safer, Smarter Estates  
[www.aquaprotec.co.uk](http://www.aquaprotec.co.uk)



# TABLE OF CONTENTS

1

The Challenge: Why Aqua Remote® is Needed

2

The Problem with Traditional Monitoring

3

Introducing Aqua Remote®

4

How Aqua Remote® Works

5

Benefits for Healthcare & Education

6

Hardware Spec & Features

7

Dashboard Walkthrough

8

Aqua Remote® in Action



# The Challenge



Safe water systems depend on consistent monitoring – but in reality, estates teams are stretched, resources are tight, and daily pressures mean small issues can go unnoticed until they become costly problems.

Traditional methods rely heavily on manual checks, scattered data, and reactive fixes. It's no surprise that compliance slips, risks increase, and teams feel the strain.

## Common symptoms of the problem:

- Missed or inconsistent temperature checks
- Paper-based records that are hard to track
- Slow awareness of failing assets
- High labour demand for routine monitoring
- Escalating maintenance costs due to delayed intervention
- Limited visibility across multiple buildings or large sites

When early warning signs are missed, risks grow quietly in the background – from bacterial growth and temperature loss to unnoticed asset deterioration. The result is more site visits, more disruption, and more pressure on staff already managing heavy workloads.

**There's a clear need:** estates teams require a faster, smarter, and more reliable way to monitor risk, gain insight, and stay compliant - without increasing resource demands. **Aqua Remote®** exists to solve exactly this.



# The Problem



Manual water temperature checks were never designed for today's estates. They're slow, reactive, inconsistent, and expensive.

Common Pain Points:

- Blind spots between visits where faults develop unnoticed
- Outdated reporting methods that make audits stressful and time-consuming
- Limited real time insight, meaning issues are often found after they've become risks
- Rising operational costs linked to labour, travel, and repeat site visits

These challenges don't just create extra work – they increase the likelihood of **compliance failures, unplanned shutdowns, reputational damage** and **costly disinfections**.

Traditional monitoring only gives you snapshots. Today's estates **need continuous visibility, instant alerts, and reliable data** to protect safety and reduce operational strain.

We've combined our 35+ years of experience, with smart tech to provide a real solution that saves hassles, saves visits and saves money.



# AQUA REMOTE<sup>®</sup>

## Smart. Simple. Reliable.

Aqua Remote is our intelligent water monitoring platform that brings your entire estate into one clear, real time dashboard – accessible from your laptop, tablet, or phone.

It replaces slow, manual temperature checks with **automated, accurate, 24/7 data**, giving you total visibility and instant peace of mind.

### What It Does

- Continuously monitors your water systems in real time
- Sends alerts the moment temperatures drift out of safe range
- Stores all compliance data securely – ready for audit at any time
- Centralises multiple buildings or sites into one easy view

### Why It Matters

- No more blind spots
- No more delays
- No more costly visits

Aqua Remote<sup>®</sup> turns reactive water management into proactive protection.

## 1. Install & Activate



- Wireless digital sensors installed on all key outlets
- Battery life 8+ years, with SIM card communication
- No reliance on Wi-Fi



## 2. Monitor & Capture Data



- Records water temperature and usage every minute
- Sends secure data to the cloud every 15 minutes
- Works like a fridge sensor – no need for frequent recalibration

# How AQUA REMOTE® works

## 4. Review & Improve



- Teams are notified to urgent noncompliance via alerts
- Monthly trend data to identify and prove risks
- Optimise systems and plan remedial works









## 3. Analyse & Report



- A real-time online platform is accessible on mobile or desktop
- Estate Managers can view on the go, real time data
- Reports include flushing activity, usage profiles and temperature trends



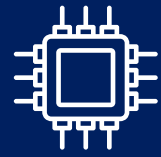
# Benefits of AQUA REMOTE®

<p> <b>Early issue detection</b> Spot risks before they become failures, shutdowns, or compliance breaches.</p>	<p> <b>Fewer Site Visits</b> Reduce impact on service users - less manual checks, engineer time, and travel costs. No unnecessary patient delays.</p>
<p> <b>Reduce CO<sub>2</sub></b> Lower CO<sub>2</sub> output by reducing the need for frequent engineer site visits</p>	<p> <b>Full Estate Visibility</b> Monitor and manager multiple sites, wards and departments at outlet level from the dashboard</p>
<p> <b>Stronger Compliance</b> Consistent, clear data with trend analysis and downloadable reports</p>	<p> <b>Supports IPC</b> Reduces the exposure of infection on wards as fewer routine visits are needed</p>

"Using the [Aqua Remote®](https://www.aquaprotec.co.uk) technology has allowed the Trust to **ensure compliance and offer reassurance** when monitoring our flushing regime. The temperature monitoring has given us a second layer to our monitoring, helping to **identify temperature issues** within specific areas"

**Deputy Head of Estates, Royal Orthopaedic Hospital**

# Hardware Spec & Features



## Gateway

- Built-in battery backup (Up to 8 hours)
- Secure two-way communication
- Weather-resistant design
- 4G Cellular connectivity
- Supports Multiple Sensors (1k+)
- Lifetime warranty



## Module

- Long Battery Life (Up to 10 years)
- Secure two-way communication
- Waterproof and Dustproof
- Easy to use USB-C ports
- Wireless communication
- Offline Data Storage
- Lifetime Warranty



## Sensor

- Available in 1m Length & more
- Secure two way communication & up to 0.5° accuracy
- Waterproof and Dustproof
- Easy to use USB-C connection
- Durable Design
- Hassle free clip on installation
- Lifetime Warranty



# Dashboard Walkthrough



Your downloadable site report gives a clear breakdown of performance. See each asset's minimum and maximum temperatures, the number of readings taken and weekly RAG-rated risk levels. all in one place. It's a quick, reliable way to understand how every outlet is behaving across the month.

### Outlet-by-outlet breakdown

### Weekly RAG risk rating

**DETAILED SITE REPORT**

ASSET	POINT	TYPE	TEMPERATURE			READINGS			WEEKS			
			OFFSET	MIN	MAX	TOTAL	PASSED	FAILED	1	2	3	4
Sink 1 Toilets, Ground floor	Hot	SK - sink		8.28 °C	61.76 °C	2406	3	2403	LOW	MEDIUM	LOW	MEDIUM
Sink 1 Toilets, Ground floor	Cold	SK - sink		8.37 °C	22.05 °C	2392	2252	140	LOW	LOW	LOW	LOW
Sink 2 Toilets, Ground floor	Cold	SK - sink		8.16 °C	25.44 °C	887	841	46	HIGH	LOW	LOW	LOW
Sink 2 Toilets, Ground floor	Hot	SK - sink				0	0	0	HIGH	NODATA	NODATA	NODATA
Kitchen Sink Kitchen, Ground floor	Hot	SK - sink		7.96 °C	58.32 °C	809	5	804	HIGH	LOW	LOW	MEDIUM
Kitchen Sink												

### Min/Max Temperatures

This **Flushing report** is part of your **downloadable Weekly Site Monitoring Report** and reveals where flushing isn't happening as instructed. It pinpoints exactly which asset needs flushing, whilst showing all of the readings with their min and max temperature.

**WEEKLY SITE MONITORING REPORT - RT7A705358**  
AQUA PROTEC LIMITED - Unit 27 – Aqua Protec Office

**WEEK 49 2025**  
Mon 1 Dec 2025 - Sun 7 Dec 2025

**MONITORING POINTS REQUIRING FLUSHING**

ASSET	POINT	TYPE	TEMPERATURE			READINGS			FLUSHED
			OFFSET	MIN	MAX	TOTAL	PASSED	FAILED	
WHB Male WC, Ground floor	Blended	SK - sink		17.28 °C	29.79 °C	182	0	182	<input type="checkbox"/>

This page can be printed from our weekly report and handed to the responsible member of staff to ensure compliance is met.

# AQUA REMOTE<sup>®</sup> in Action



High-risk areas like seclusion units are some of the hardest environments to monitor and maintain. Pipework is hidden behind secure panels, access is restricted, and **Infection Prevention & Control** limits how often engineers can safely enter. This combination makes it easy for issues to go unnoticed and even harder to diagnose them quickly. With Aqua Remote, the estate team **gained the visibility** they were missing, **reduced disruptive visits**, and **identified problems** long before they became costly risks.



## THE PROBLEM

A seclusion unit had hidden pipework **behind secure panels**, making issues difficult to detect. Traditional monitoring offered **limited visibility** into water behaviour.



## THE CHALLENGE

Routine maintenance was complicated by **IPC restrictions** – panels couldn't be opened while patients were present, **increasing delays** and the risk of undetected problems.



## WHAT AQUA REMOTE ENABLED

Aqua Remote<sup>®</sup> captured real-time temperature data from inside the unit, revealing issues **instantly without needing physical access**. It provided visibility into a space normally hard to monitor.



## THE OUTCOME

**Fewer visits, less disruption, and faster identification** of underlying issues. Aqua Remote<sup>®</sup> added a vital extra layer of oversight for an area often isolated or overlooked.

# AQUA PROTEC

Aqua Remote is transforming how estates manage water safety - freeing up time, reducing risk, and giving you the visibility traditional monitoring can't.

Let's explore how remote monitoring can support your estate.

 01386 426987

 [www.aquaprotec.co.uk](http://www.aquaprotec.co.uk)

 [sales@aquaprotec.co.uk](mailto:sales@aquaprotec.co.uk)